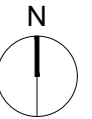


GENERAL NOTES



THIS DRAWING TO BE READ IN CONJUNCTION WITH ARCHITECTS DRAWINGS, CONSULTANT ENGINEERS DRAWINGS AND SPECIFICATIONS, AND LANDSCAPE ARCHITECTS DRAWINGS AND SPECIFICATIONS.

— SITE BOUNDARY FOR THE PURPOSES OF THIS APPLICATION

TOTAL OF 621 Units

Phase 1 - 196 Units

Houses - 110 units
Maisonette - 8 units
Duplexes - 78 units

Phase 2 - 76 Units

Duplexes - 76 units

Phase 3 - 349 Units

Apartment Block A - 138 units
Apartment Block B - 211 units

Notes:

- Phasing plan is indicative only and Developer will consult with local authority to agree final phases based on market demand and as part of Compliance submission
- Traffic lights and road works necessary to accommodate future right turn lane, to be constructed as part of Phase 1
- Pump station and associated access route over landscaped area to be constructed as part of Phase 1
- Delivery of Creche as part of Phase 3



NOTES:

DO NOT SCALE FROM DRAWINGS. WORK TO FIGURED DIMENSIONS ONLY. ARCHITECT TO BE NOTIFIED OF ALL DISCREPANCIES.

REVISIONS

DATE	DESCRIPTION	No.

CLIENT:

CAIRN
CAIRN Homes Properties Ltd

M C O R M

MC CROSSAN O'ROURKE MANNING ARCHITECTS

PROJECT TITLE:

SHD AT HOLYBANKS, SWORDS

DRAWING TITLE:
Phasing Strategy

DATE:

Mar22

SCALE:
1:2500@A2

JOB NO:
19022

DRAWN BY:

IDF

REVISION:

DRAWING NO:
PL56

1 Grantham Street, Dublin 8, D08 A49Y, Ireland.
Tel: 01-4788700 Fax: 01-4788711 E-Mail: arch@mcorm.com